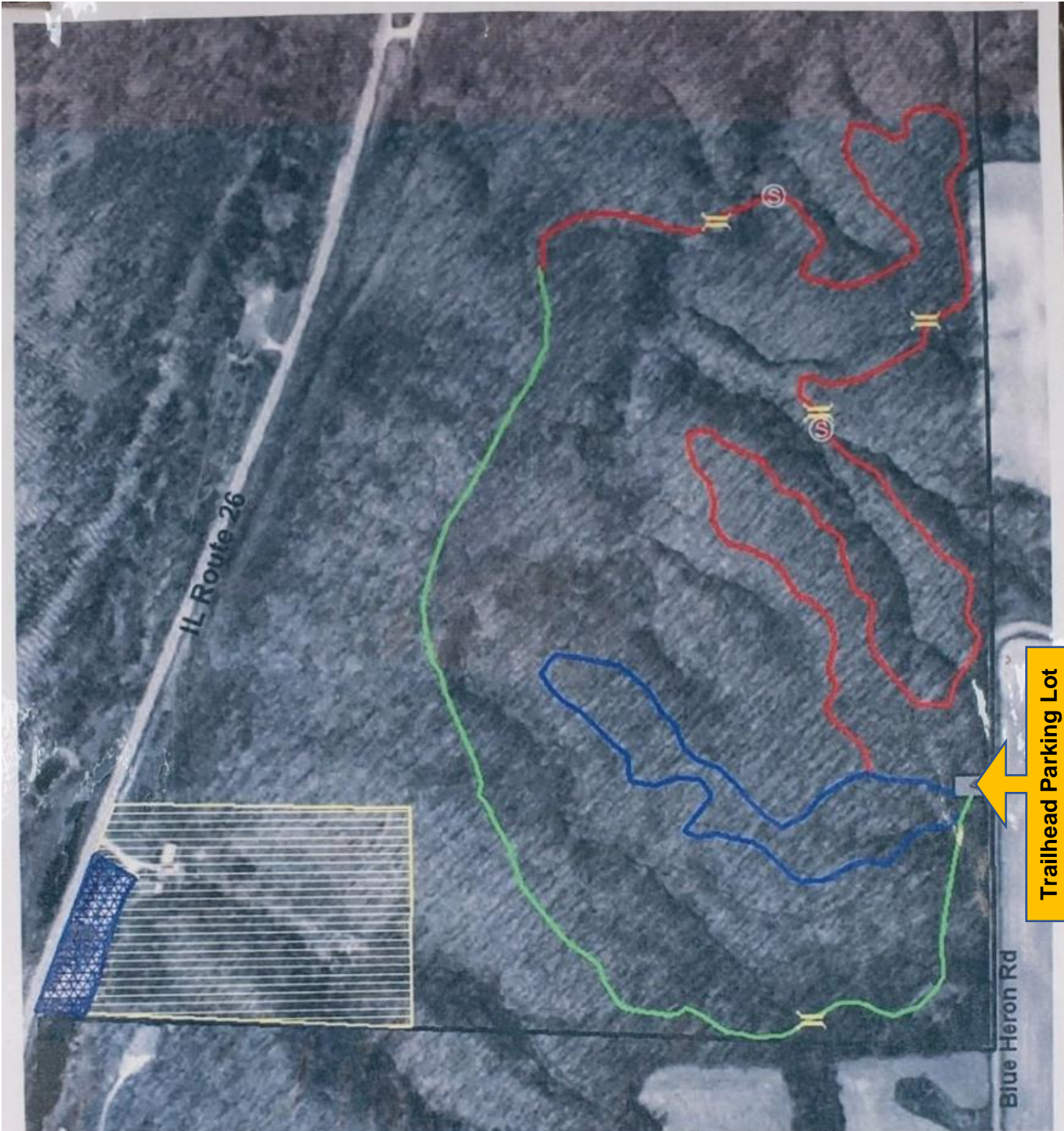


Marshall State Fish & Wildlife Area

(map posted at trailhead kiosk on Blue Heron Road)



Trailhead Parking Lot
Blue Heron Road

Marshall SFWA Trail Map

- Ⓢ Stairs
- == Bridges
- ↗ Ravine Run Trail - 2 miles - Difficult
- ↘ Bluff Trail - 0.75 mile - Slight
- ↙ Walnut Trail - 0.5 mile - Slight
- ▭ Parking Lot and Trail Head
- ▭ Restricted Area
- ▨ Marshall SFWA Headquarters
- ▭ Marshall SFWA Boundaries

