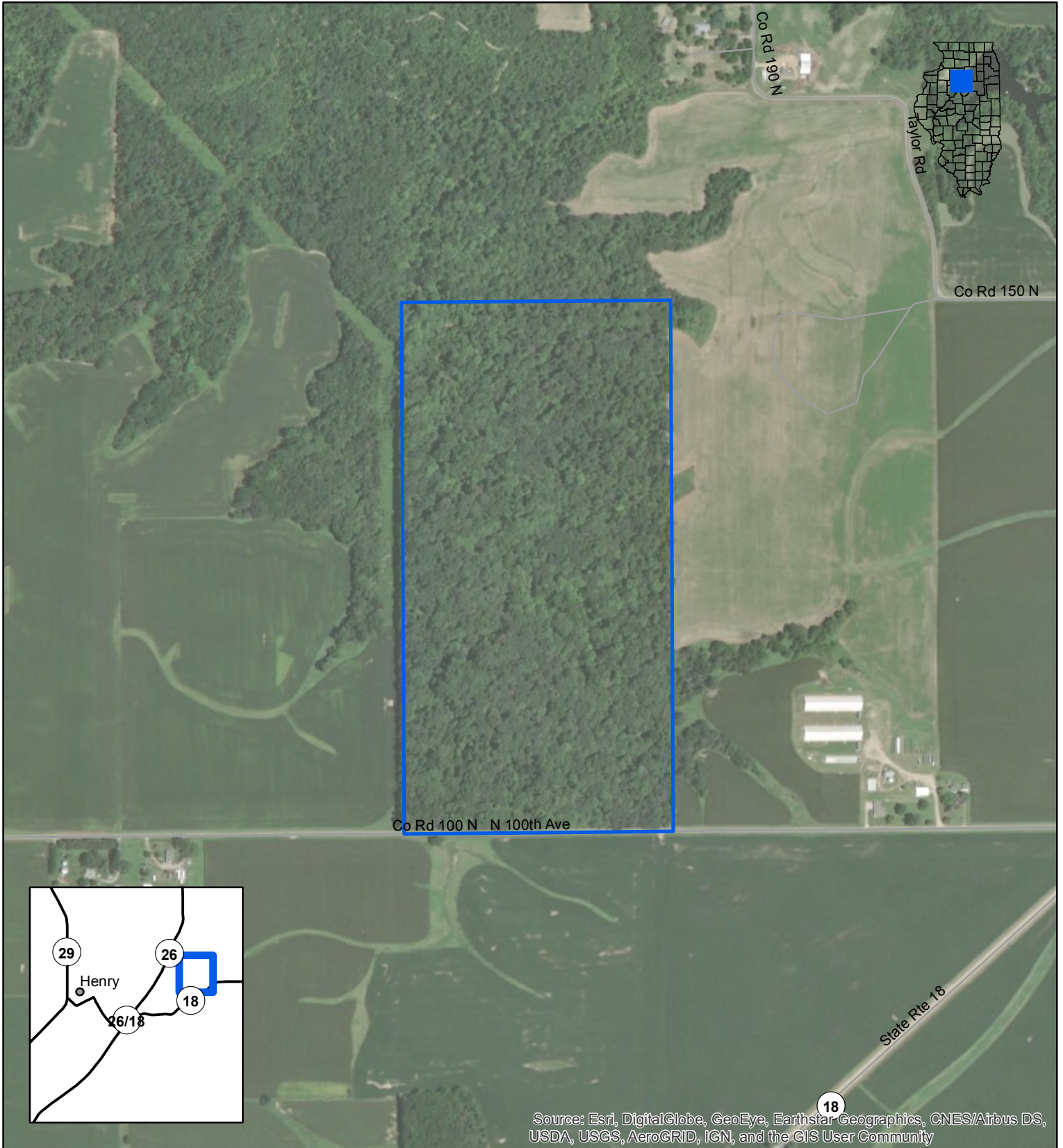


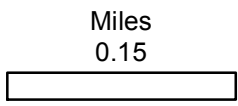


# George S. Park State Natural Area



Source: Esri, DigitalGlobe, GeoEye, Earthstar Geographics, CNES/Airbus DS, USDA, USGS, AeroGRID, IGN, and the GIS User Community

- IDNR Boundary
- Parking Lot



N  
  
Date: 7/23/2019

C/O: Lake DePue State Fish and Wildlife Area  
P.O. Box 52; DePue, IL 61322  
Phone: 815/447-2353

For further information refer to the site's hunter fact sheet at:  
<https://www.dnr.illinois.gov/hunting/FactSheets>